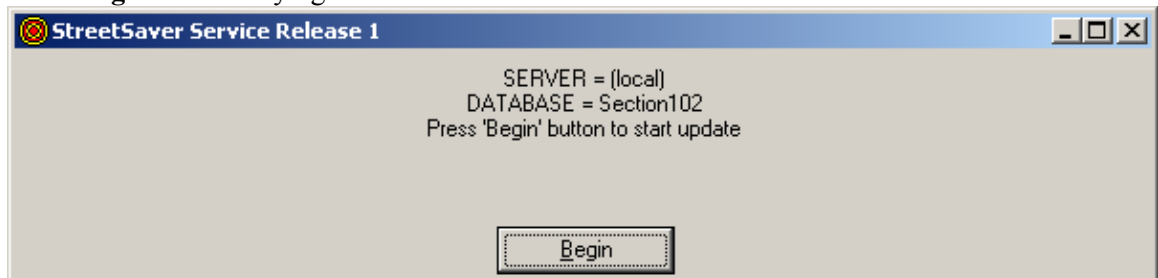


StreetSaver™ v.8 Service Release 1

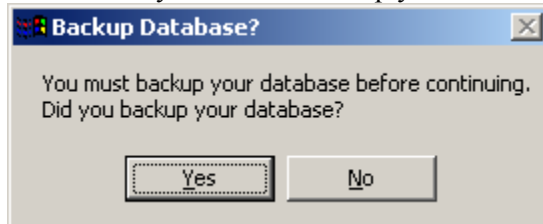
(Cumulative updates since first release in November 2003)

Installation Instructions:

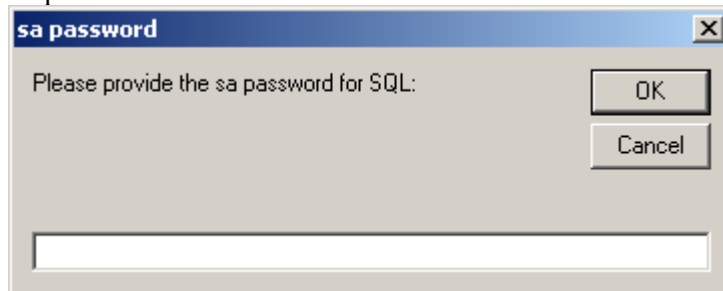
1. Before you start, make sure you backup your database. The backup procedures can be found on page 4-4, Chapter 4 of the Computer User Guides. Please note the location where the backup file is stored.
2. Download **ss8sr1.exe** from MTCMP Web site.
(www.mtcpms.org/support/support.html)
3. Double click on **ss8sr1.exe** to install.
4. Click **Begin** after verifying that the Server and Database names are correct.



5. Click **Yes** if you have backed up your database.



6. Enter the password for your MS SQL Server or MSDE if prompted. If you use MSDE, the password is blank.



7. Click **OK** when done.

