

Figure 8-5:
Calculating PCI from Inspection Units by Management Section

The PCI Output screen will appear. This screen gives you three choices on how to proceed:

1. **Update Management Section(s) and View PCI Report**
2. **Update Management Section(s)**
3. **View PCI Report - (Management Section(s) will NOT be updated)**

The default choice is always *Update Management Sections and View PCI Report* (see Figure 8-6).

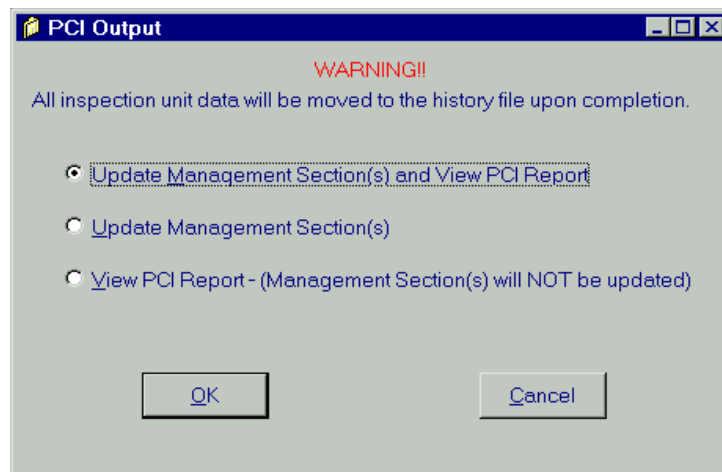


Figure 8-6:
PCI Output

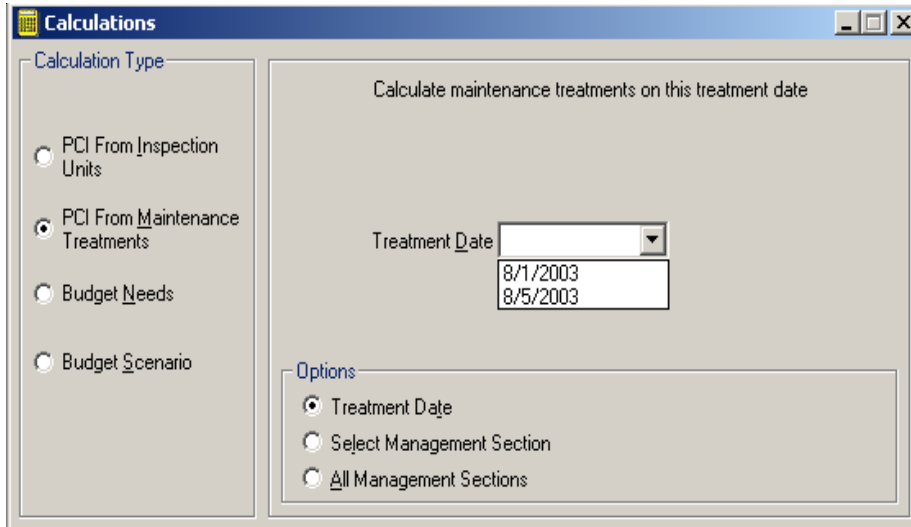



Figure 8-11:
Calculating PCI from Maintenance Treatments by Treatment Date

NOTE: Only one date may be selected.

To calculate PCI from maintenance treatments for a specified management section, choose *Select Management Section*. A table that shows all sections with applied treatment data will appear (see Figure 8-12). Select a management section, and click the **Start Calculation** button  to begin.

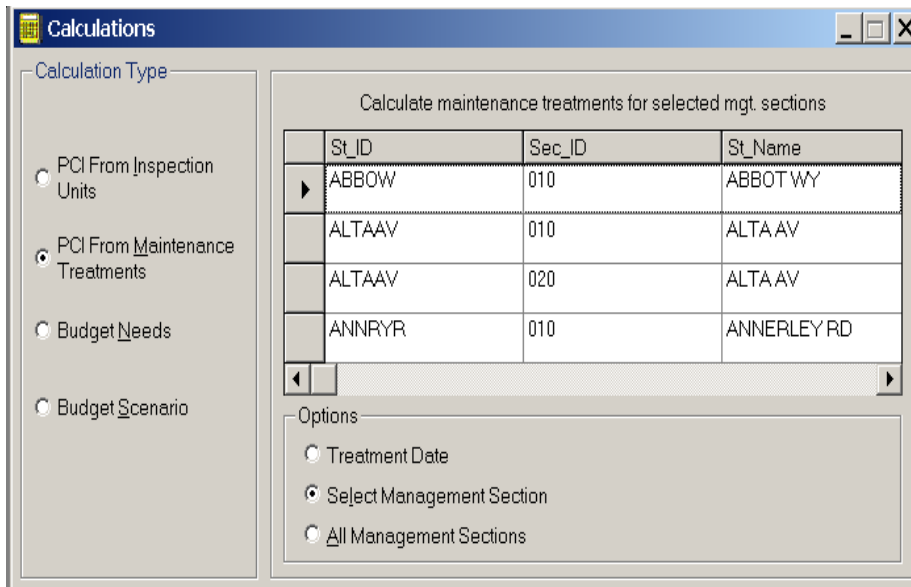


Figure 8-12:
Calculating PCI from Maintenance Treatments by Management Section

The above fields can be modified by using the up and down arrows (prior entry plus or minus one) or by placing the cursor in the text box and typing. Please remember that these values are also used in the Budget Scenarios calculation! If you decide to change any of these entries, you must re-run **Budget Needs** and **Budget Scenarios**.

You are now ready to run **Budget Needs**. Click the **Start Calculation** button  to begin.

Budget needs will be calculated for the entire network. However, you may wish to estimate Budget Needs for Functional Class, Area ID, or funding source. You can get these results from the Reports module.