

Chapter 4

System Administration

StreetSaver™ v.8 consists of two modules - Pavement Management and System Administration. The System Administration module contains database management, table maintenance, and security functions, and should be used primarily by your System Administrator (who may be different than the day-to-day StreetSaver™ user). For more information regarding features on Microsoft SQL Server, check out www.microsoft.com/sql/.



To start System Administration, double-click the System Administration icon.

The login screen shown in Figure 4-1 will appear. To continue, enter the Login Name and the password. The default Login Name and password are “supervisor” and “superuser”, but the password can be changed in the **Security Administration** submodule.

The password is case sensitive.



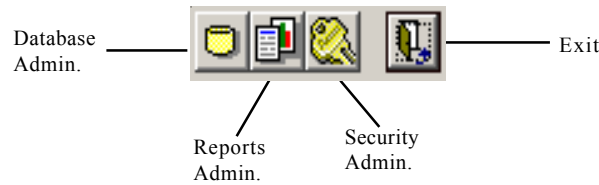
Figure 4-1:
System Administration
Login

The *System Administration* main screen, pictured in Figure 4-2, is the gateway to all of the System Administration submodules: **Database Administration**, **Reports Administration**, and **Security Access Control**. To access one of the submodules, use the File menu or click the appropriate button on the toolbar (see Figure 4-3).

Figure 4-2:
System Administration
Main Screen



Figure 4-3:
System Administration
Main Toolbar



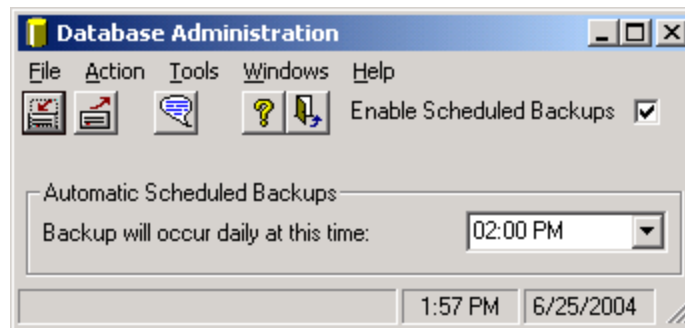
The **Database Administration** submodule allows you to maintain the stability and integrity of your database.



The **Reports Administration** submodule allows access and editing of all available reports and graphs in StreetSaver™.



The **Security Administration** submodule allows you to add new users, change user information, and set the level of security each user has to screens, reports, and graphs.



The **Backup Button** allows saving a copy of your database to the server/local machine.



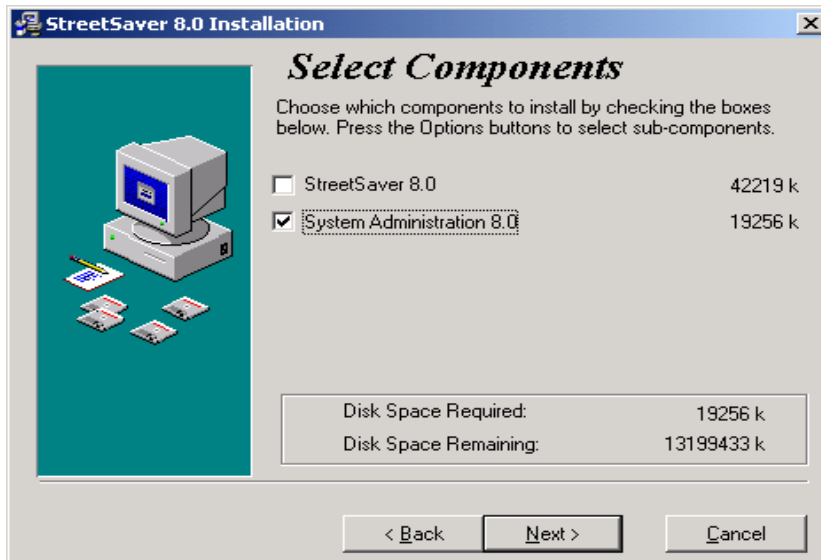
The **Restore Button** allows restoring a previously backed up database from the server/local machine.

Database Administration



Click the **Database Administration** button to access functions that can help you to maintain the stability and integrity of your StreetSaver™ v.8 database.

There are two ways to administer your database. If you have installed MSDE on your server/local machine, you must administer your database by using **System Administration** program, which is included in the StreetSaver CD. You can install the **System Administration** program on the server/local machine by following Steps 6 through 11 starting from page 2-2 in Chapter 2 - Installation. The last step is shown as follows:



Network Installation:

*If you housed your database on a network server, you must install **System Administration** from the CD for MSDE configuration. For full version of MS SQL Server 2000, you can use **Enterprise Manager** to administer database.*

First, the program needs to connect to MSDE or SQL Server, as shown in Figure 4-4. If your database is housed on a server, the Database Administration button will be disabled from the client machine. This button will only enable when you are on the actual server/machine that housed the database.

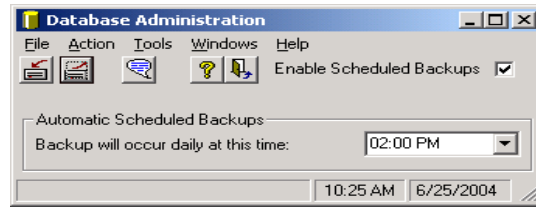


Figure 4-4:
SQL System Administrator (sa) Login Screen

The sa password depends on whether the user is using MSDE or SQL Server. For MSDE, the password is blank. For SQL Server, the user will need to contact the Database Administrator for the password.

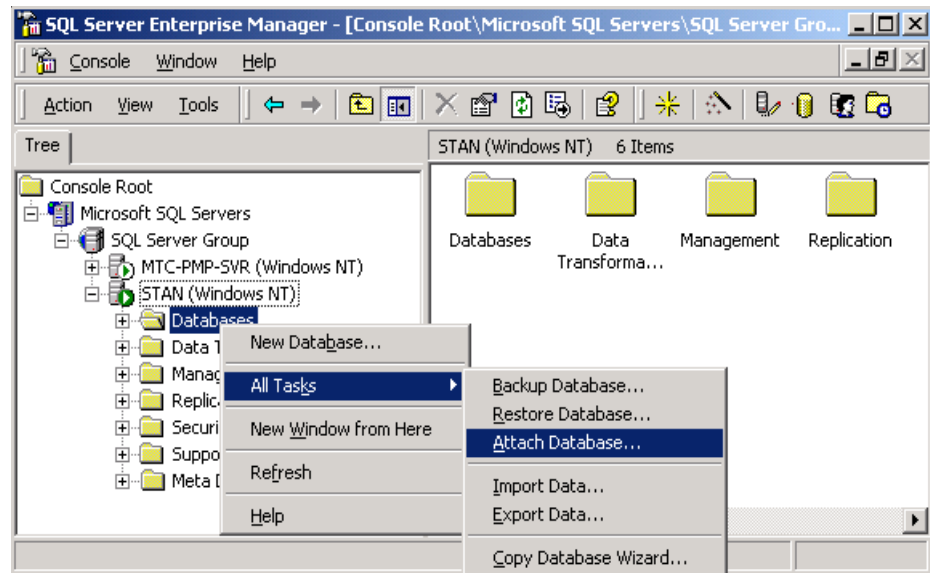
After connecting, the screen in Figure 4-5 will be shown below:

Figure 4-5:
Database Administration
Screen



The following pages from pages 4-6 to 4-8 illustrate database administration using **Enterprise Manager** in MS SQL Server. This module contains three options, as shown in Figure 4-6.

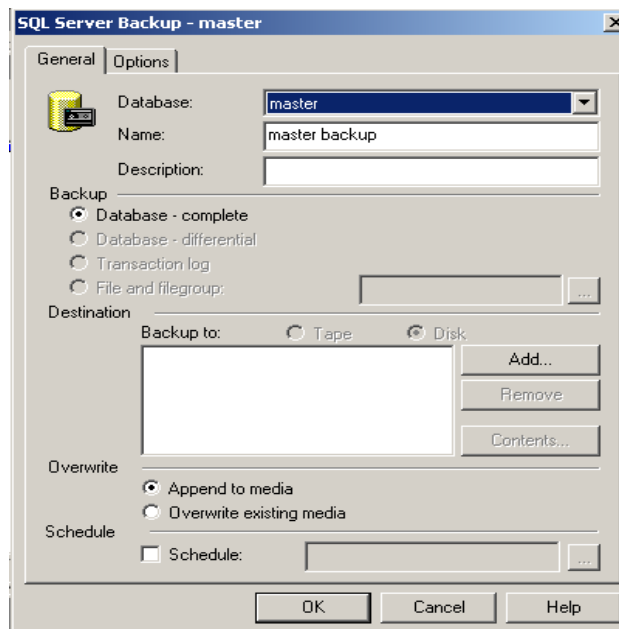
Figure 4-6:
Database Administration
Action Screen



Backup

To backup the database, click on Backup Database. The pop-up window has two tabs: General and Options.

Figure 4-7:
SQL Server Backup
master - General tab



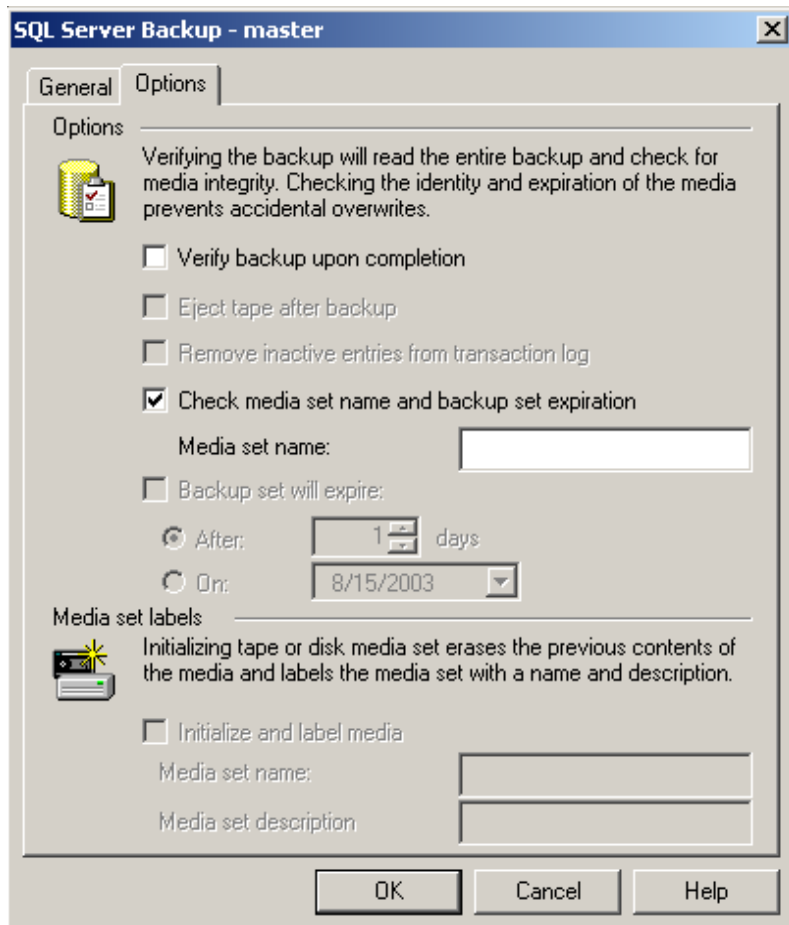
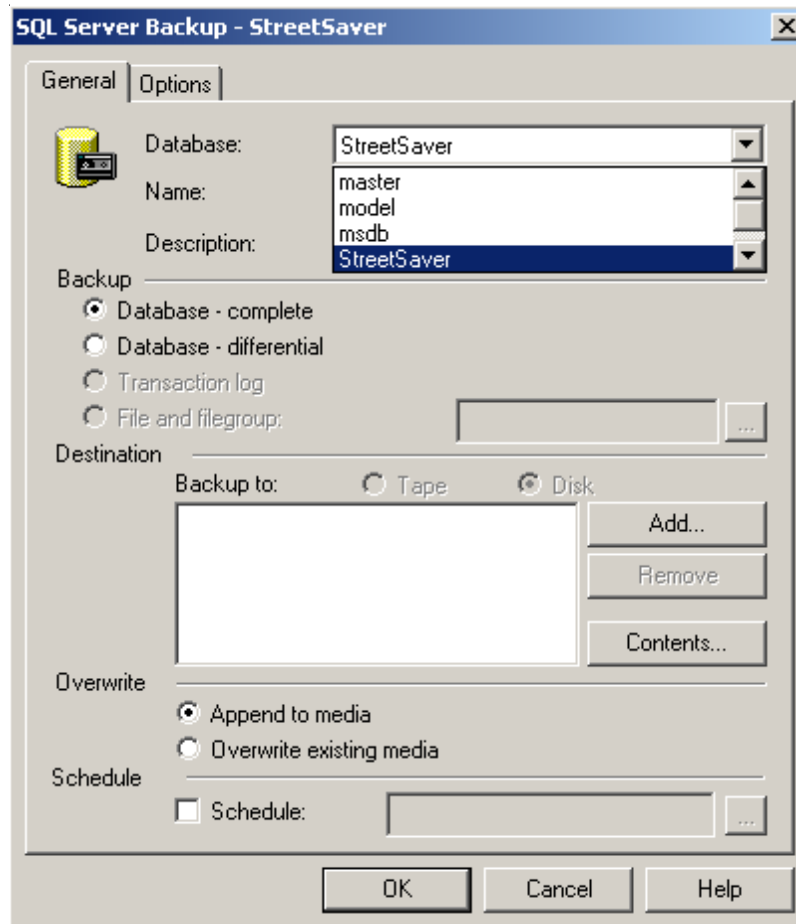


Figure 4-8:
SQL Server Backup
master - Options tab

The *Options* tab allows the user to set some several parameters for this process (Figure 4-8).

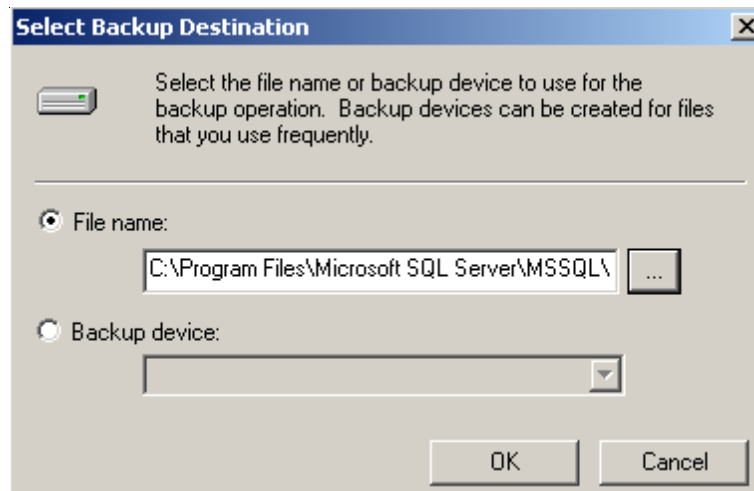
Under the *General* tab, the user can select the database to backup. Select StreetSaver shown in Figure 4-9.


Figure 4-9:
SQL Server Backup - StreetSaver

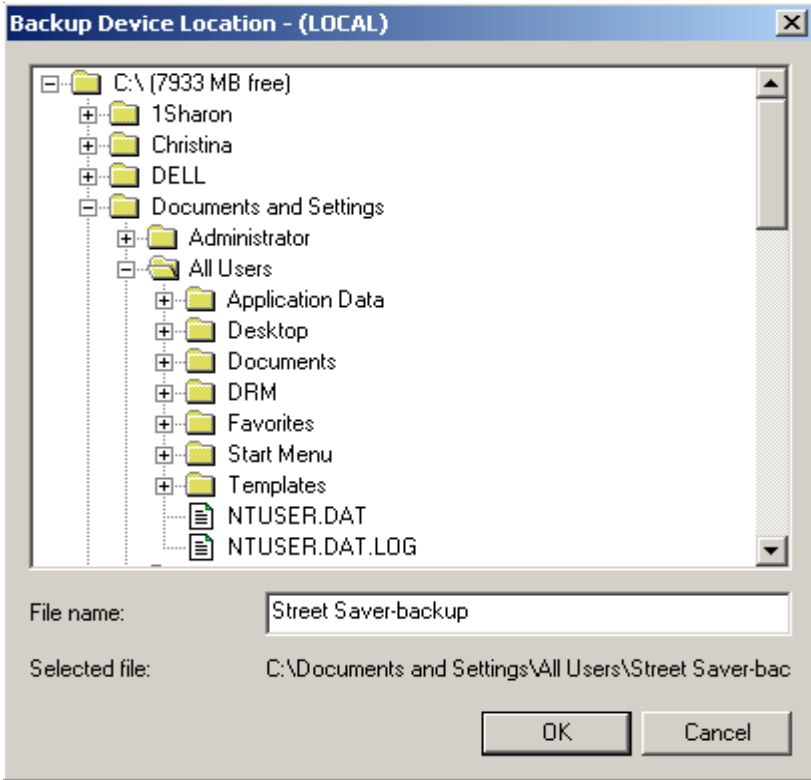


Use the **Name** text box to name the backup set. Click **Add** to select the backup destination. The screen is as shown in Figure 4-10.

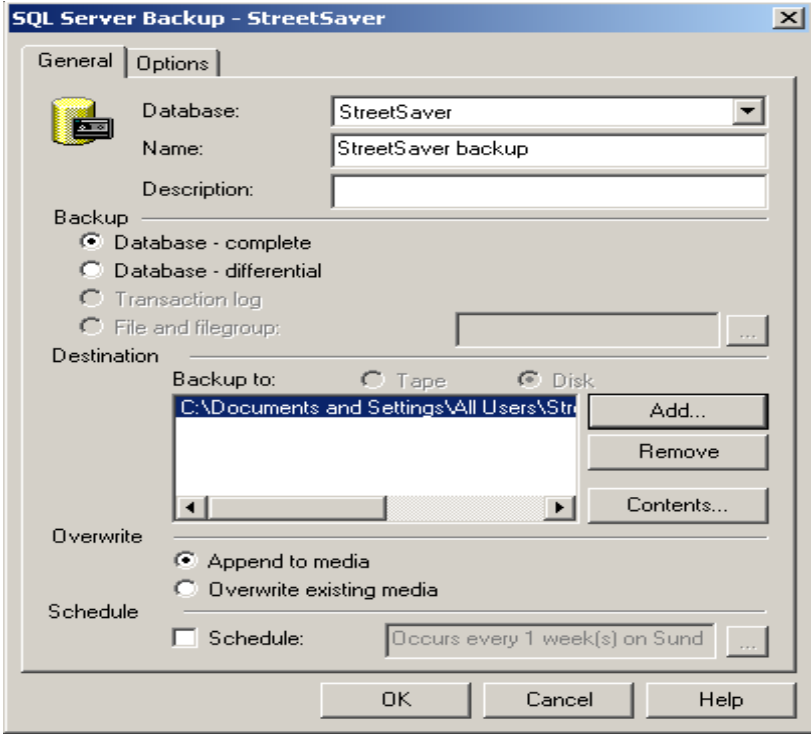
Figure 4-10:
SQL Server Backup - Select Backup Destination



Click  button to create the file name.



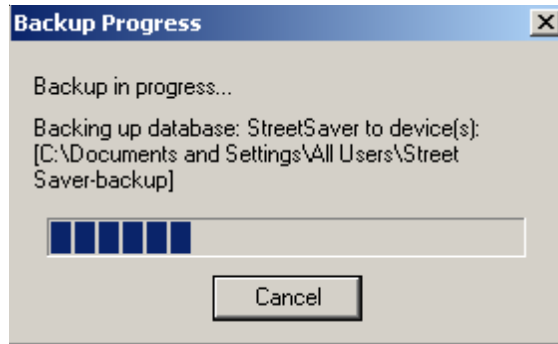
*Figure 4-11:
SQL Server Backup -
Backup Device Location*



*Figure 4-12:
SQL Server Backup -
StreetSaver*

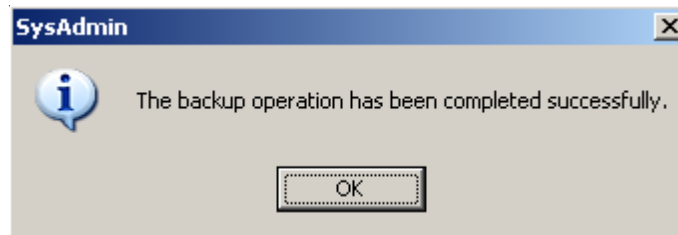
Click **OK** button to finish the backup.

Figure 4-13:
SQL Server Backup - Backup in Progress



After the backup operation has finished, the following window pops up.

Figure 4-14a:
SQL Server Backup - Complete Window

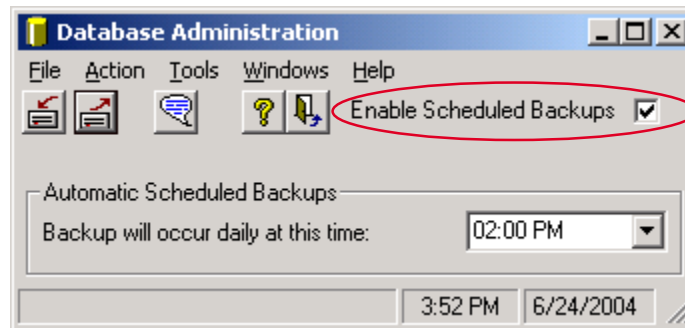


Click **OK** to complete the Backup.

Schedule Database Backup

By checking the Enable Scheduled Backups box, user can set up a schedule to automatically backup a copy of the database.

Figure 4-14b:
Scheduling database backups



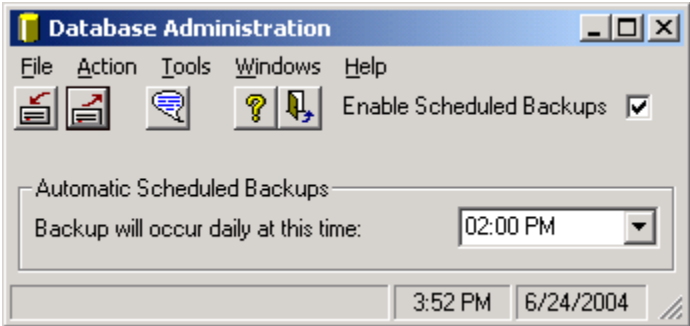
User with full version of MS SQL Server should consult with your database administrator on how to setup a backup schedule.

Restore

The Restore function decompresses a backup of your database and copies the database file into the appropriate directory. In other words, the system will overwrite the existing database!

Make sure that you have exited the StreetSaver program before you do a restore!

To use this function, click the **Restore Database** under **Action** menu, or click on  as shown below.



The following screen opens, navigate to where the backup database is saved as shown below:

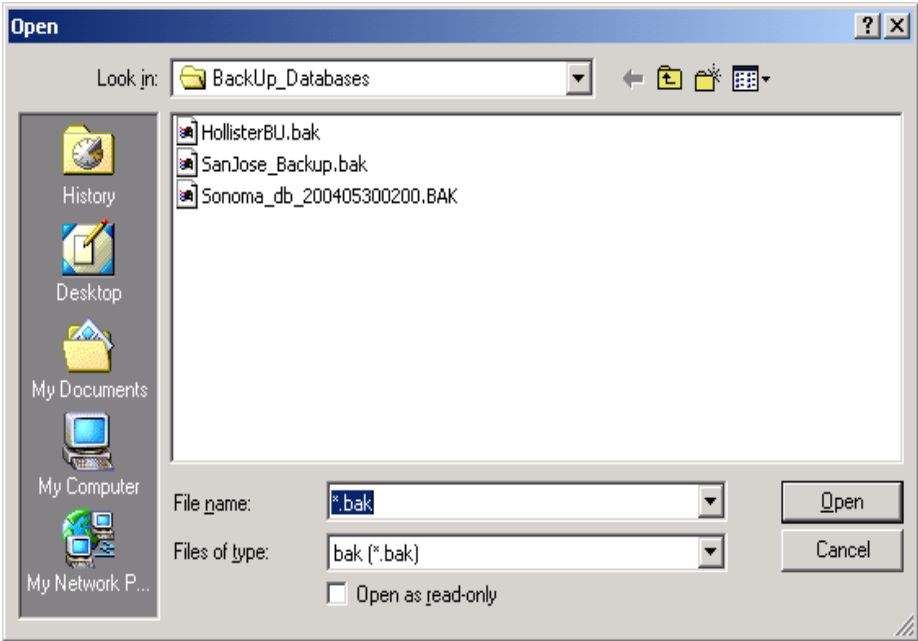
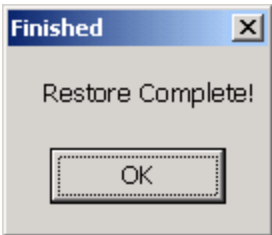


Figure 4-15:
Resore Database

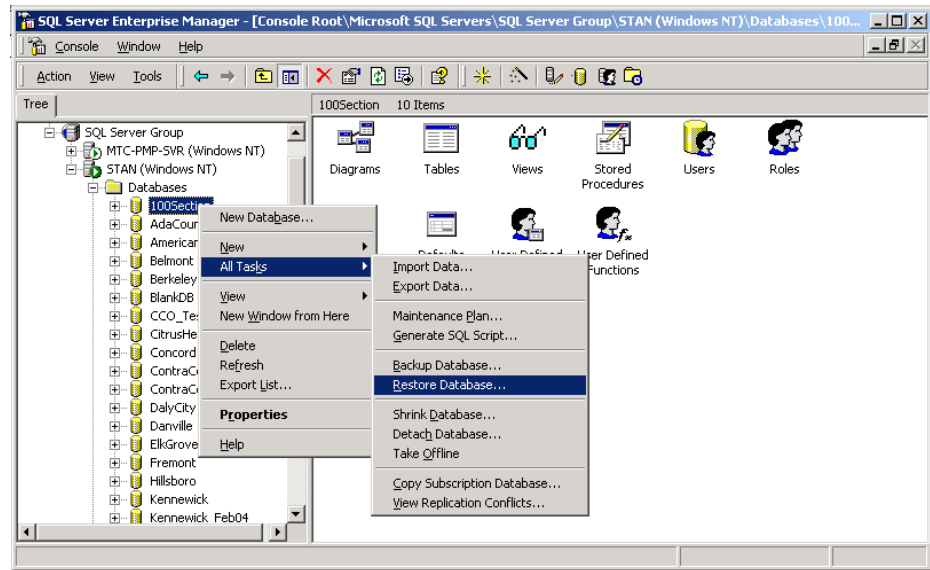
Click Open, and the restoration process will begin. Click OK when done.



Restore with MS SQL Server

If you have full version of MS SQL Server, you may restore the database through **Enterprise Manager** as shown in Figure 4-16a.

Figure 4-16a:
Restore database through Enterprise Manger in MS SQL Server



There are two tabs on Restore Database window - *General* tab and *Options* tab.

Figure 4-16b:
Restore Database - General tab

