

Chapter 14

Utilities Submodule

The *Utilities* submodule can be accessed through the Utilities button on the StreetSaver™ Main screen. The Utilities functions are primarily administrative (e.g., data management tools), and do not relate to the core purpose of StreetSaver™.

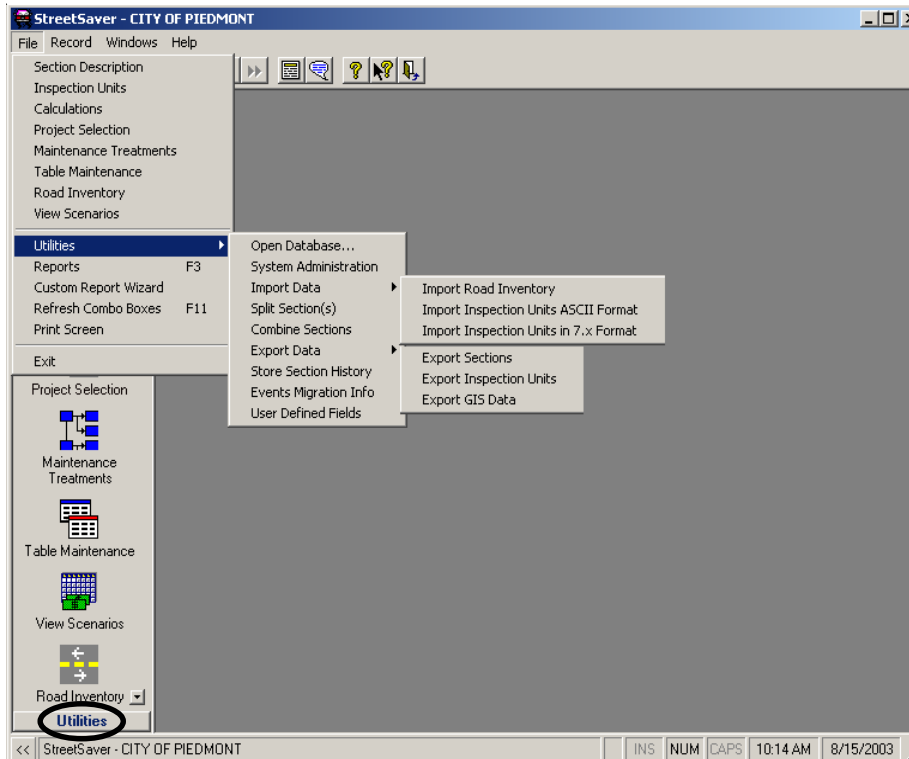


Figure 14-1:
Utilities Drop-down Menu

Within the Utilities submodule, users can accomplish some of the following:

- Open database
- Open System Administration
- Import Road Inventory
- Import inspection unit data from 7.X format.
- Split a management section into two or more sections
- Combine multiple management sections into a single section
- Export sections data
- Export inspection units
- Export GIS Data
- Store section history
- Events Migration Information Table
- Modify user defined fields

There are two more features in Utility screen:

- Custom Report Wizard
- Reports

MTC stores backup copies of Bay Area databases at no charge.

Open Database

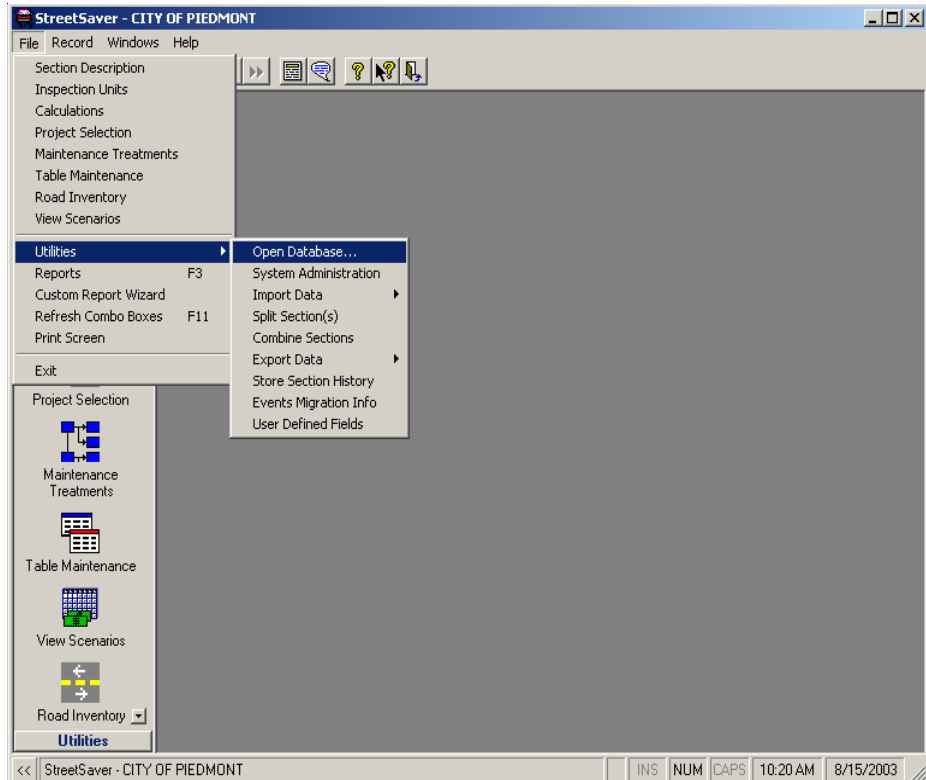
You can open a database through this utility if you manage multiple databases.

Execution



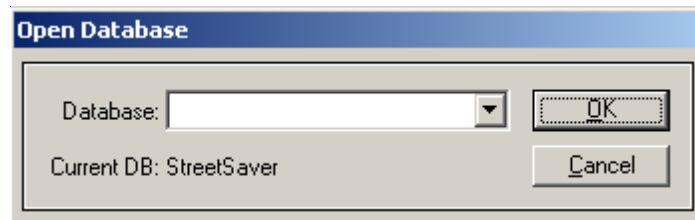
Select the Open Database button under the *Utilities* Screen or select the Open Database option under the *Utilities* menu.

Figure 14-2:
Utilities Menu - Open Database



The message shown below will appear.

Figure 14-3:
Open Database



Click drop-down list box, highlight the database name and click **OK** to continue. The selected database will be opened.

Click **Cancel** to remain running the current database.

Import Inspection Units 7.x Format

Execution:

In the Utilities menu you can import inspection units in 7.x format. The inspection units must be in the following format:

Des_Cond_Key, Date of Inspection, Inspection Unit Number, Special, Area of Inspection, No Distress, Inspection Area, Distress Type Key 1, Severity Key 1, Distress Area 1, Distress Type Key, Severity Key 2, Distress Area 2,...., Distress Area 21

The code for Special Area of Inspection, No Distress, Distress Type and Severity keys are as follows:

Inspection unit with Special Area of Inspection:

Is a Special area = 1, Not a Special area = 0

Inspection unit with No Distress:

Has "No Distress" = 1, Has Distresses = 0

Distress Type Key	Description
SYS0000001	Alligator Cracking
SYS0000002	Block Cracking
SYS0000003	Distortions
SYS0000004	Long & Trans. Cracking
SYS0000005	Patching & Utility Cut Patching
SYS0000006	Rutting & Depressions
SYS0000007	Weathering & Raveling
SYS0000008	Corner Break
SYS0000009	Divided (Shattered) Slab
SYS0000010	Faulting
SYS0000011	Linear Cracking (Long, Trans & Diagonal Cracks)
SYS0000012	Patching & Utility Cuts
SYS0000013	Scaling/Map Cracking/Crazing
SYS0000014	Spalling

Severity Key	Description
SYS0000001	High
SYS0000002	Medium
SYS0000003	Low

An example of a regular inspection unit is as follows:

Des_Cond_Key = BD00001E41, Date of Inspection = 6/20/2005, Unit Number = 1, 99SF of Low Severity Alligator Cracking

BD00001E41,6/20/2005 , 1,0,0 , 2900 ,SYS0000001,SYS0000003, 99

.....

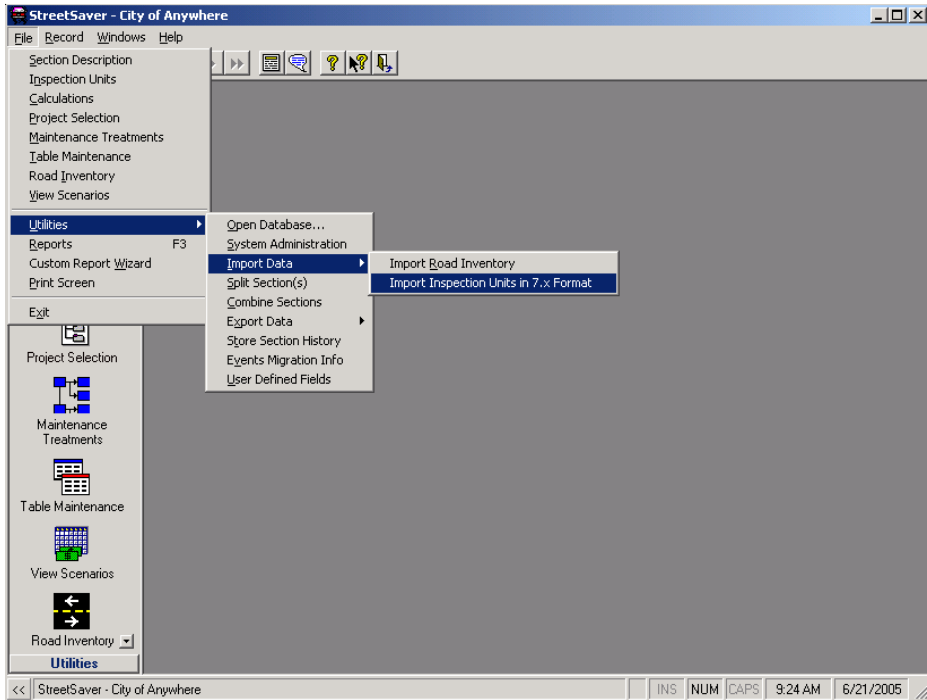
An example of the Inspection Unit #2 with no distress is as follows:

BD00001E41,6/20/2005 , 2,0,1 , 2900 ,.....

Execution

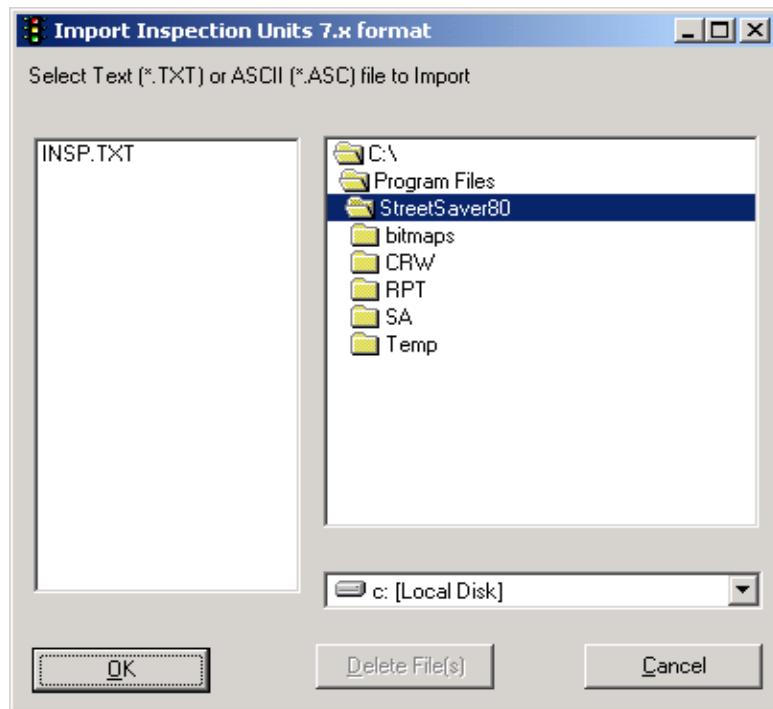
Select the **Import Inspection Units** option from the *Utilities* menu.

Figure 14-4:
Utilities Menu - Import Inspection Units



The screen shown in Figure 14-5 will appear.

Figure 14-5:
Import Inspection Units



Locate and select the desired text file. Click the **OK** button to import the inspection unit data. The records will automatically be placed in the appropriate tables.